

Pressure Control Valves UV 8.2

Back Pressure Valves

Valve for High Pressures for Medium Flow Rates



Technical Data

Connection DN	15 - 50
Connection G	3/8 - 2
Nominal Pressure PN	100
Inlet Pressure	2 - 100 bar
K _{vs} -Value	0.2 - 5.5 m ³ /h
Temperature	400 °C
Medium	liquids, gases and steam

Description

Medium-controlled overflow valves are simple control valves offering accurate control while being easy to install and maintain. They control the pressure upstream of the valve without requiring pneumatic or electrical control elements.

The UV 8.2 overflow valve is a diaphragm, piston or bellows-controlled spring-loaded proportional control valve for high pressures and small volumes. It can be supplied with three types of connections: sockets, flanges and welding spigots. Each size of valve may be fitted with three different seats. The valve cone may be fitted with a soft or metallic seal.

The inlet pressure to be controlled is balanced across the valve seat by the force of the valve spring (set pressure). If the inlet pressure rises above the set pressure, the valve opens. With decreasing inlet pressure the valve control orifice reduces, when the pipeline is depressurised the valve is closed. Rotating the adjusting screw clockwise increases the inlet pressure.

These valves are no shut-off elements ensuring a tight closing of the valve. In accordance with the VDI/VDE guideline 2174 a leakage rate of 0.05 percent of the constant volume flow is permitted for the valve in closed position.

Options

- » Pressure gauge connection
- » Valve cone and seat armoured
- » For toxic or hazardous media: sealed bonnet complete with leakage line connection (incl. sealed adjusting screw). Must be installed with a leakage line capable of draining leaking medium safely and without pressure
- » Various diaphragm and seal materials suitable for your medium
- » Special connections: Aseptic, ANSI or DIN flanges, welding spigots; other connections on request
- » Special versions on request

Operating instructions, Know How and Safety instructions must be observed. All the pressure has always been indicated as overpressure. We reserve the right to alter technical specifications without notice.



K_{vs}-Values [m³/h]

nominal diameter	G	3/8	1/2	3/4	1
	DN		15	20	25
seat	I	0.2	0.2	0.25	0.25
	II	0.9	0.9	0.9	0.9
	III	1.7	1.8	2	2.2

K_{vs}-Values [m³/h]

nominal diameter	G	1 1/4	1 1/2	2
	DN	32	40	50
seat	I	0.4	0.4	1
	II	2.5	2.5	3.5
	III	3.9	3.9	5.5

Setting Range [bar], Nominal Diameter*

2 - 4	4 - 7	7 - 10	5 - 16	10 - 20
PN 6	PN 16	PN 16	PN 25	PN 25

Setting Ranges [bar], Nominal Pressure*

10 - 25	20 - 35	35 - 50	45 - 63	60 - 100
PN 40	PN 63	PN 100	PN 100	PN 100

* inlet and outlet pressure

Pressure Control Valves UV 8.2

Back Pressure Valves

Valve for High Pressures for Medium Flow Rates



Materials			
Temperature	80 °C	130 °C	400 °C
Body	G 3/8 - 1, DN 15 - 25 = C 22.8 G 1 1/4 - 2, DN 32 - 50 = steel welded optional CrNiMo-steel for all diameters		
Bonnet	steel welded optional CrNiMo-steel		
Internals	Rg optional CrMo-steel or CrNiMo-steel		CrNiMo-steel
Spring	CrNi-steel	CrNi-steel	CrNi-steel
Soft Seal	EU	FPM optional EPDM or PTFE	-
Metallic Seal	CrNiMo-steel	CrNiMo-steel	CrNiMo-steel
Diaphragm	CR	FPM optional EPDM	-
Protection Foil	PTFE (option)	PTFE (option)	-
O-Ring for Piston	NBR	FPM optional EPDM or PTFE	-
Bellow	-	-	CrNiMo-steel

Dimensions [mm] Globe Design

size	nominal diameter			
	G 3/8	G 1/2	G 3/4	G 1
	-	DN 15	DN 20	DN 25
A	110	110	110	110
A ₁	220	220	220	220
B	30	30	30	30
C	420	420	420	420

size C with bellow + 130 mm

Dimensions [mm] Elbow Design

size	nominal diameter			
	G 3/8-1 DN 15 - 25	G 1 1/4 DN 32	G 1 1/2 DN 40	G 2 DN 50
A	55	100	100	100
A ₁	110	*	*	*
B	65	108	108	108
B ₁	120	*	*	*
C	420	650	650	650

size C with bellow + 130 mm

* on request

Weights [kg] BSP female connection

nominal diameter							
G 3/8	G 1/2	G 3/4	G 1	G 1 1/4	G 1 1/2	G 2	
13	13	13	13	21	21	21	

with bellow + 4 kg

Weights [kg] flange connection

nominal pressure PN	nominal diameter					
	DN 15	DN 20	DN 25	DN 32	DN 40	DN 50
16 - 40	16	16.2	16.6	25.8	26.8	27.8
63	16.4	17.6	19.4	27	30.6	31.4
100	16.4	17.6	19.4	27.4	30.6	36.4

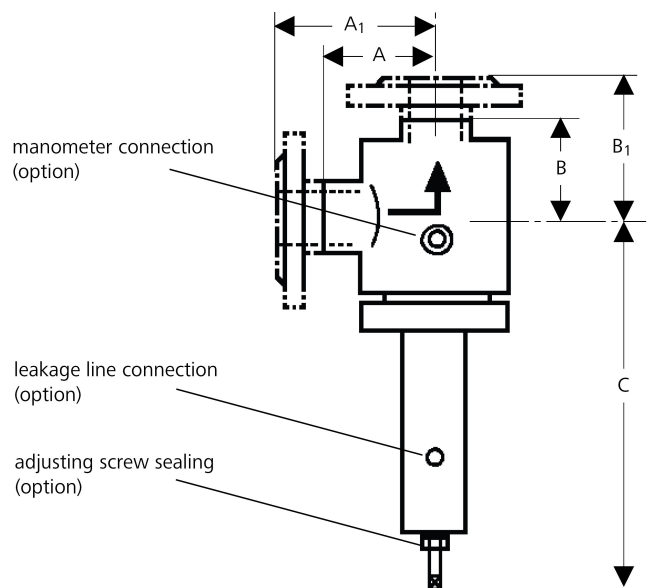
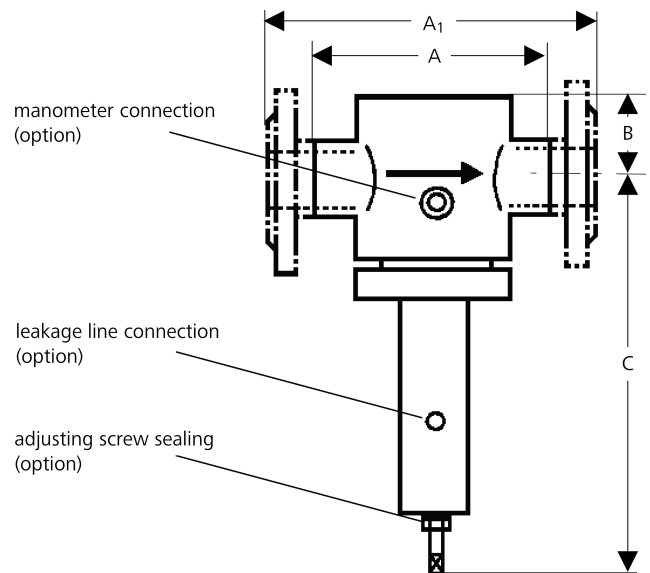
with bellow + 4 kg

Special designs on request.

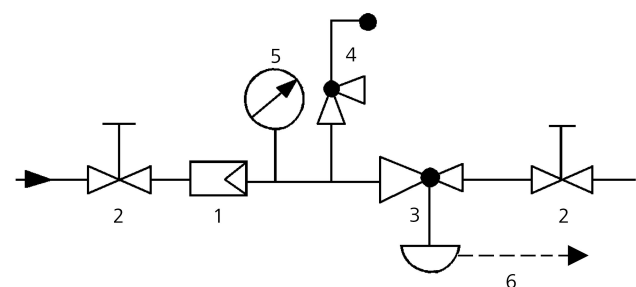
The pressure has always been indicated as overpressure.

Mankenberg reserves the right to alter or improve the designs or specifications of the products described herein without notice.

Dimensional Drawing



Recommended Installation



- 1 Strainer
- 2 Shutoff valves
- 3 Overflow Valve
- 4 Safety Valve
- 5 Pressure Gauge
- 6 Leakage Line (option)

use MANKENBERG-Products