

DMV 400

3-phasig

max 3350 m³/h

max 3400 Pa

Volumenstrom / performance of air
Druckdifferenz ΔP_{fe} / pressure ΔP_{fe}

Motor-Nennleistung / power out

4,0 kW

Nennspannung / voltage

Δ/Y 230/400 V

Nennstrom / current

14,4/8,3 A

Nennzahl / speed

2900 min⁻¹

Frequenz / frequency

50 Hz

Schutzart IP / protection mode IP

55

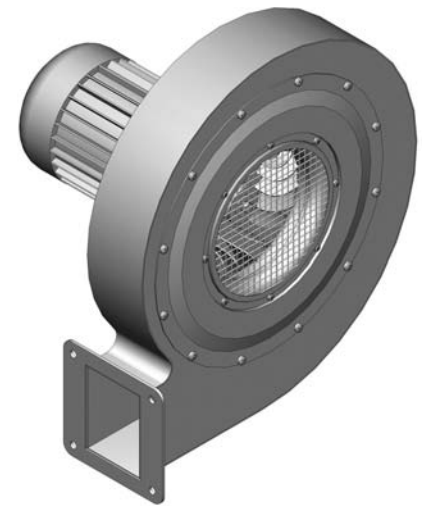
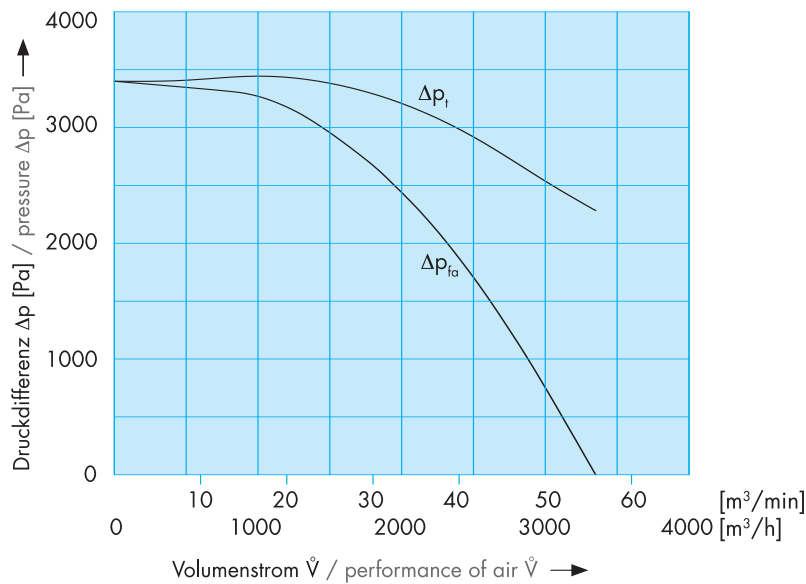
Schalldruckpegel / noise level

89 dB (A)

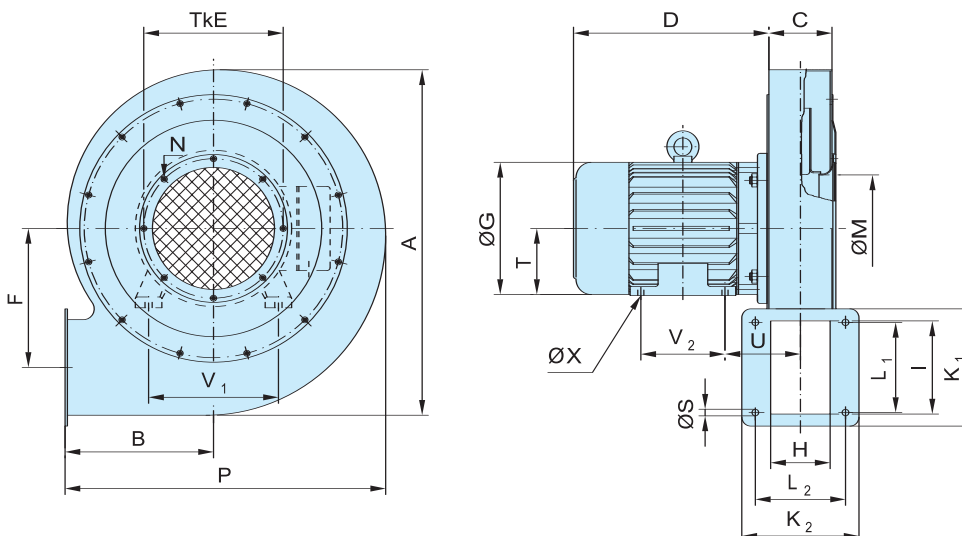
Gewicht / weight

ca. 64,0 kg

ATEX-Ausführung,
siehe Rückseite
ATEX-Design,
see next page



Abmessungen / Measurements



ATEX

A	575
B	247
C	105
D	325 (368)
E	232
F	231
G	220 (260)
H	99
I	155
K ₁	195
K ₂	195
L ₁	150
L ₂	150
M	178
N	M5
P	534
S	11
T	112 (132)
U	126 (141,5)
V ₁	190 (216)
V ₂	140
X	12

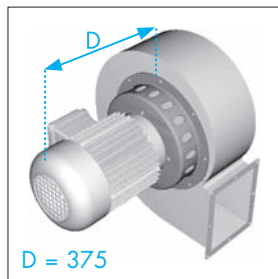
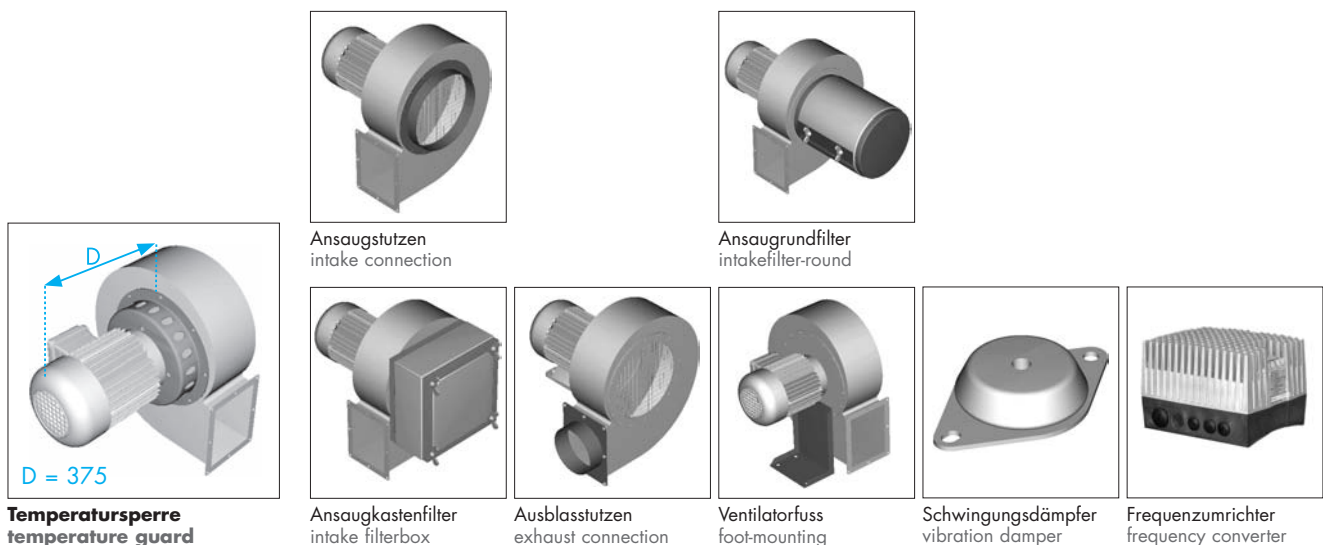
Technische Änderungen vorbehalten. Bei Druckfehlern wird keine Haftung übernommen. Abbildungen sind unverbindlich.
Changes to the technical progress are subject to carry out. Only the dates on the plate of the motor drive are binding.

ATEX-Ausführung / ATEX-Design II 2 G c T3

	DMV 400
	3-phasig
Temperaturklasse / temperature class	T3
Motor-Nennleistung / power out	4,6 kW
Nennspannung / voltage	Δ/Y 230/400 V
Nennstrom / current	16,17/9,3 A
Nenndrehzahl / speed	2910 min ⁻¹
Frequenz / frequency	50 Hz
Schutzart IP / protection mode IP	55
Schalldruckpegel / noise level	89 dB (A)
Gewicht / weight	ca. 80 kg

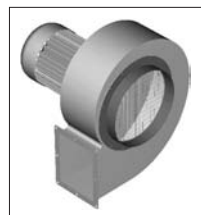


Zubehör (Abmessungen ab Seite 380) / Accessories (Measurements from page 380)

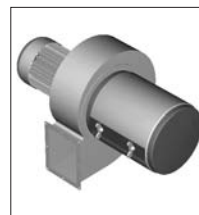


Temperatursperre
temperature guard

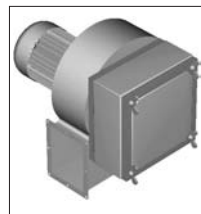
(Beschreibung siehe Seite 359)
(Description see page 359)



Ansaugstutzen
intake connection



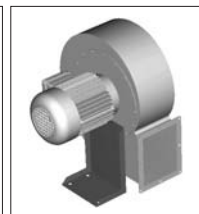
Ansaugrundfilter
intakefilter-round



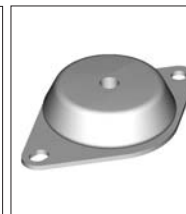
Ansaugkastenfilter
intake filterbox



Ausblasstutzen
exhaust connection



Ventilatorfuss
foot-mounting



Schwingungsdämpfer
vibration damper



Frequenzumrichter
frequency converter