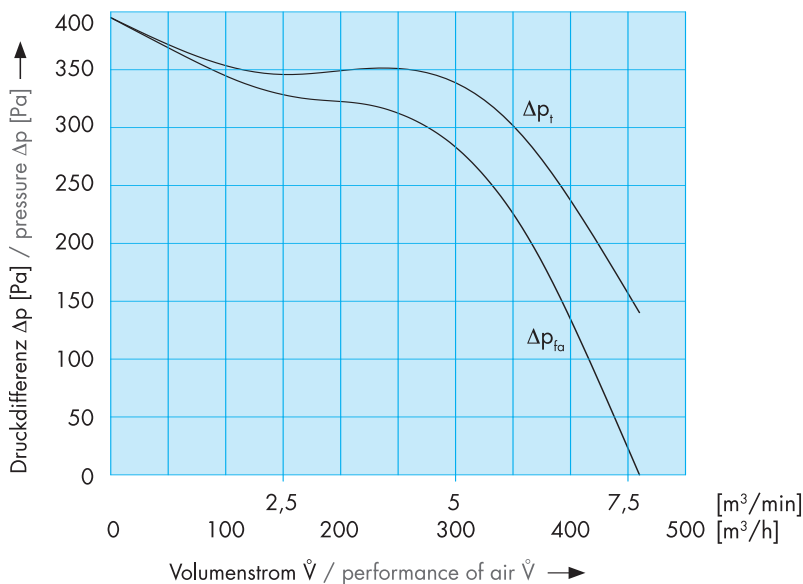




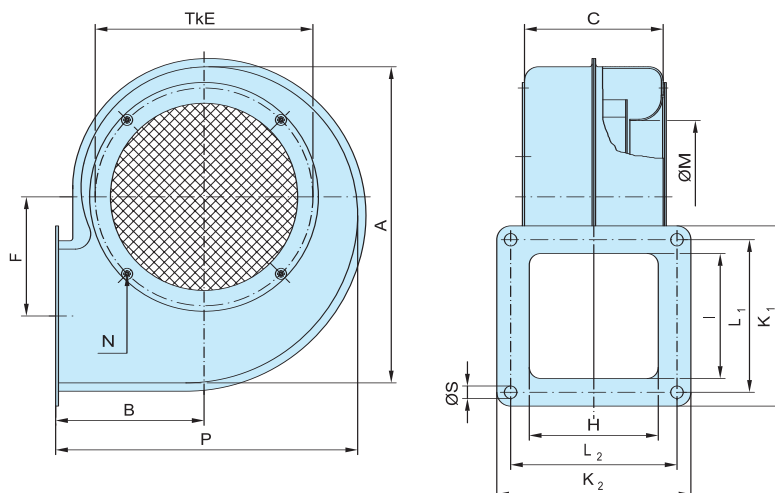
ENG 4-6 A

1-phasig

Volumenstrom / performance of air	max 460 m³/h
Druckdifferenz ΔP_{fa} / pressure ΔP_{fa}	max 395 Pa
Motor-Nennleistung / power out	165 W
Nennspannung / voltage	± 230 V
Nennstrom / current	0,75 A
Nennzahl / speed	2160 min ⁻¹
Frequenz / frequency	50 Hz
Schutzart IP / protection mode IP	44
Schalldruckpegel / noise level	69 dB (A)
Gewicht / weight	ca. 4,0 kg

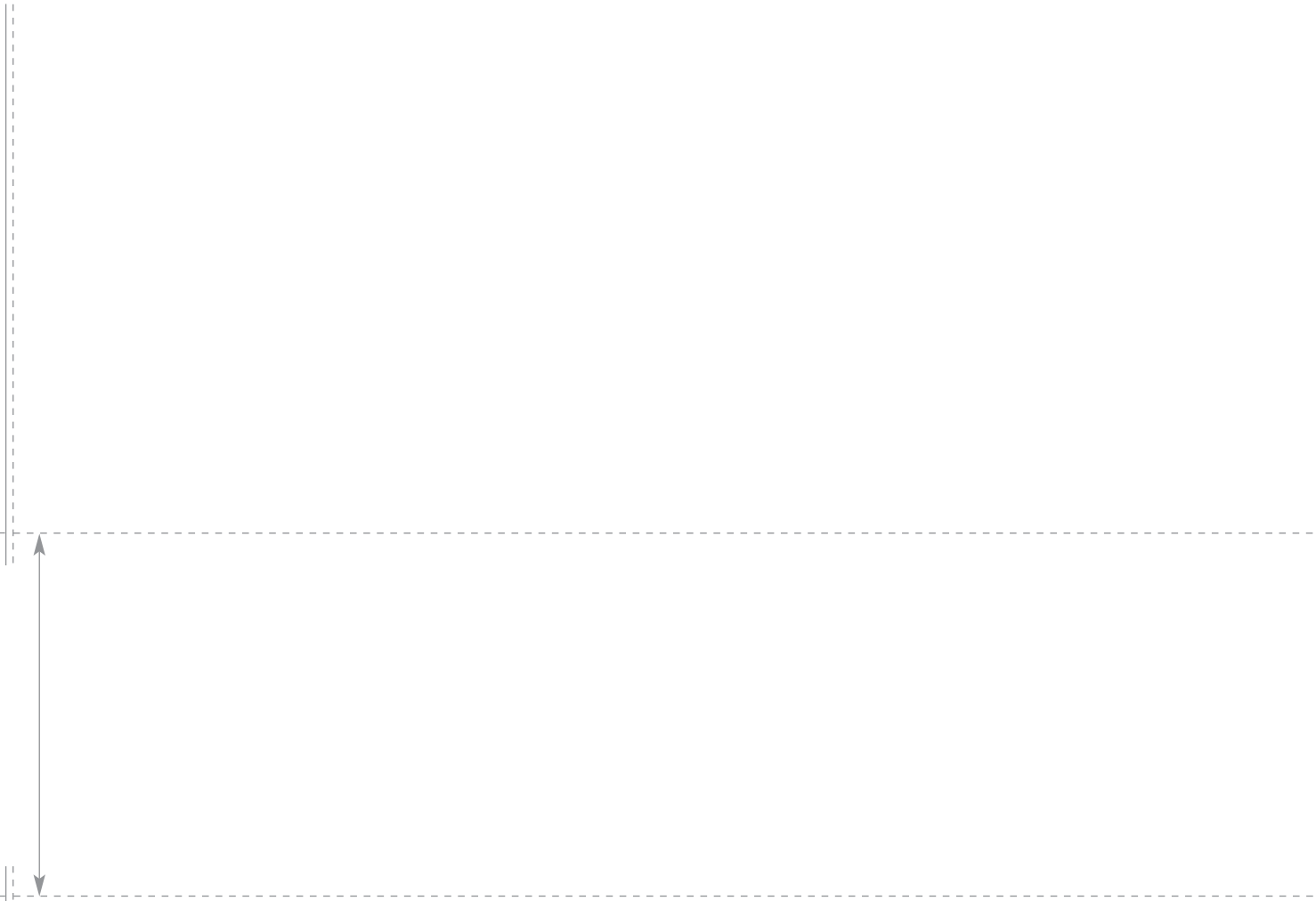


Abmessungen / Measurements

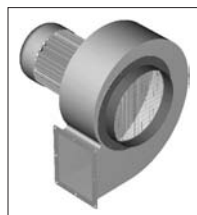


A	228
B	107
C	100
E	157
F	86
H	93
I	90
K ₁	130
K ₂	140
L ₁	110
L ₂	120
M	110
N	M5
P	218
S	9

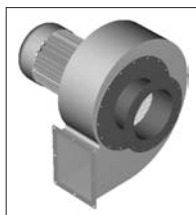
Technische Änderungen vorbehalten. Bei Druckfehlern wird keine Haftung übernommen. Abbildungen sind unverbindlich.
 Changes to the technical progress are subject to carry out. Only the dates on the plate of the motor drive are binding.



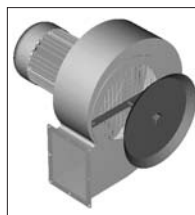
Zubehör (Abmessungen ab Seite 365) / Accessories (Measurements from page 365)



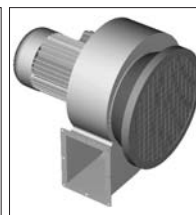
Ansaugstutzen
intake connection



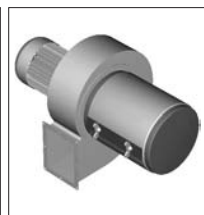
Ansaugzwischenflansch
connecting flange



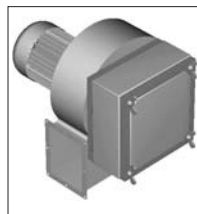
Ansaugdrossel
intake throttle



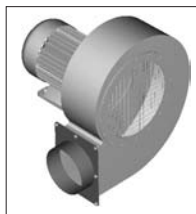
Ansaugflachfilter
intakefilter-flag



Ansaugrundfilter
intakefilter-round



Ansaugkastenfilter
intake filterbox



Ausblasstutzen
exhaust connection



Drehzahlsteller
speed regulator